

EEID – ELECTRONIC SINGLE PHASE

INDEPENDENT DRIVE

FEATURES

- Independent control of fan speed. Infinitely variable from max to min with off position
- Supply 230 VAC, 50/60 Hz, 1 Phase
- IP54 Surface & IP44 Inset ingress protection rating
- Two wire control
- Clear indication light
- Commissioning adjustable minimum speed pre-set to 20% via internal potentiometer
- Fuse 5*20mm, spare included
- RAL9010 white ivory enclosure and face. Internal polyamide.
- Max ambient temperature: 50°C

DESCRIPTION

Our EEID drive is a compact wall mounted speed controller designed for single phase voltage controllable motors (230 VAC, 50/60 Hz). It varies the output voltage by using a optotriac phase angle control.

Operational status is indicated by an LED, while a hand controlled dial provides an on/off switch and the means to infinitely control fan speed.

Suitable for inset or surface mounting with the splash-resistant housing provided.

RANGE AND MOTOR PROTECTION

To ensure correct drive selection, please choose a drive that has an amp rating that is equal to or above the fan motor full load current (FLC).

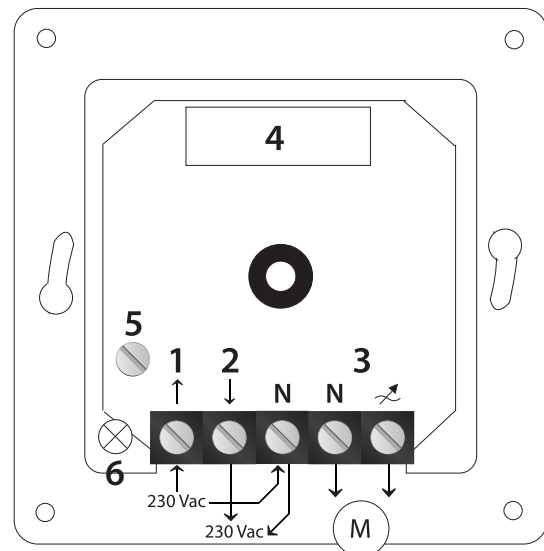
If motors are fitted with thermostat (Tk) overheat protection, we recommend the use of our EEDS controller type instead of our EEID.

MODEL	EEID1A	EEID2A	EEID4A
Part	EA900100	EA900101	EA900102
Current rating (A)	0.1 - 1.0	0.2 - 2	0.4 - 4
Fuse (A) 5*20mm	F1.25A H	F2.5A H	F5.0A H
Ingress Protection	IP44/54	IP44/54	IP54*

*Surface mount only



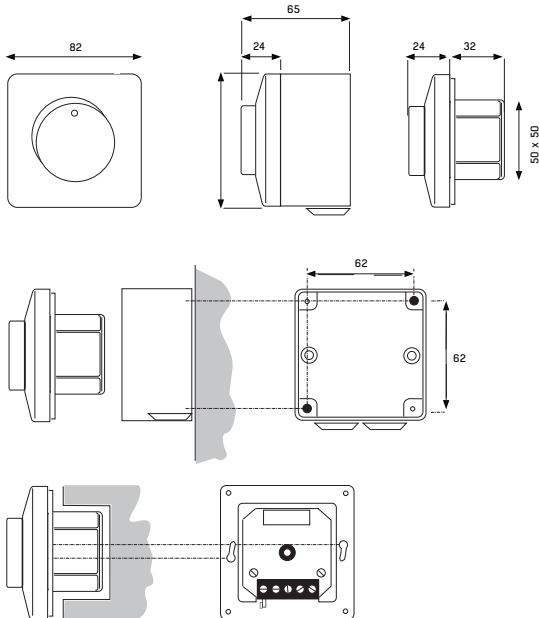
WIRING DIAGRAM



- 1 - Power supply 230 VAC, 50 Hz
- 2 - 230 VAC non-regulated output for connecting valve, dampers
- N - Neutral
- 3 - Regulated output to motor
- 4 - Fuse holder with spare
- 5 - Minimum speed adjustment trimmer (pre-set to 20%)
- 6 - Control light



DIMENSIONS AND WEIGHTS



All dimensions shown in mm

MODEL	EEID1A	EEID2A	EEID4A
Part	EA900100	EA900101	EA900102
Net Weight (g)	210	215	300
Gross Weight (g)	235	240	325

COMPATIBILITY

Our EEID Speed controller is suitable for use with single phase voltage controllable motors.

INSET MOUNTING (IP 44)

Break (Isolate) mains voltage. Connect according to diagram. Mount inner case to the wall with connections pointing down. Turn on mains voltage and controller. Adjust min. speed with insulated screwdriver and turn off controller. Mount cover with nut to the wall. Push knob in place at off position.

SURFACE MOUNTING (IP 54)

Break (Isolate) mains voltage. Mount surface mounting case to the wall together with included grommets. Connect according to diagram. Turn on mains voltage and controller. Adjust min. speed with insulated screwdriver and turn off controller. Mount cover with nut to surface mounting case. Push control dial in place at off position.

ADJUSTMENT

Trimmer (MIN) - Adjust with insulated screwdriver so that the motor does not stop due to variations of mains voltage and that it restarts after power failure.

ISOLATION AND ISOLATION AND WIRING (SEE DIAGRAM ON PREVIOUS PAGE)

A safety isolator/disconnect switch should be installed on the mains electricity side of all motor drives; Please refer to SISO product.

We recommend three wire control for increased speed stability and low speed starting.

CHANGE OF FUSE

Break (Isolate) mains voltage. Undo control dial by first turning it to the right beyond end stop and then pull towards you.. Remove the nut. Remove fuse holder with a screwdriver. Change fuse. Replace components in reverse order. Use only recommended fuses (Approved, fast, with high breaking capacity).

MOTOR PROTECTION

If motors are fitted with thermostat (Tk) overheat protection it is recommended to use the EEDS range to utilise this feature.

WARRANTY

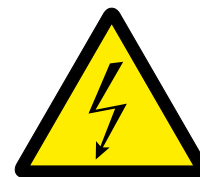
Any modifications or alterations to the product relieve the manufacturer of all responsibility. The manufacturer bears no responsibility for any misprints or mistakes in this data, and modifications or improvements to the product can be made at any time after date of publication.

MAINTENANCE

In normal conditions our controllers are maintenance-free. If external surfaces requires light cleaning, please use a dry or slightly damp cloth. If heavy cleaning is needed, then we recommend the use of a non-aggressive cleaning product. Particular attention should be paid to ensure that no fluids enter the controller. Only reconnect the controller to the mains electrical supply when it is completely dry.



General danger



Electrical hazard

All works may only be carried out by skilled personnel following the local regulations and AFTER the controller is completely isolated from the mains. Replace fuse only with same type and rating.

ALSO AVAILABLE FROM THE **WOODS** RANGE



**JMv
Aerofoil**



MaXfan²



**JM
Aerofoil**



**HT JM
Aerofoil**



**JM
Bifurcated**



Series 33



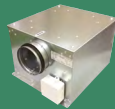
Plate Fans



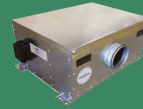
**Cased &
Plate Axial
Accessories**



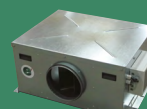
Tube Fans



**Sabina EC
Box Fans**



**Daisho AC
Box Fans**



**Daisho EC
Box Fans**



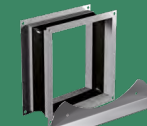
Estoc



Estoc Targe



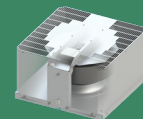
Estoc EC



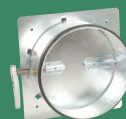
**Tube & Box
Accessories**



**Roof Units
Horizontal**



**Roof Units
Vertical**



**Fire
Dampers**



**Iris
Dampers**



Fire Valves



**Valves
Supply KE**



**Valves
Extract KK**



**Valves
Exhaust
VEFS**



**Nozzles DK
& DR**



**Louvres/
Cowls
EYMA and
DYMA**



**External
Louvres
USAV**



Controllers

Selected products available from our UK Distributors on next day delivery, if ordered by 4pm. Please call 01206 222 555 for more information.

